

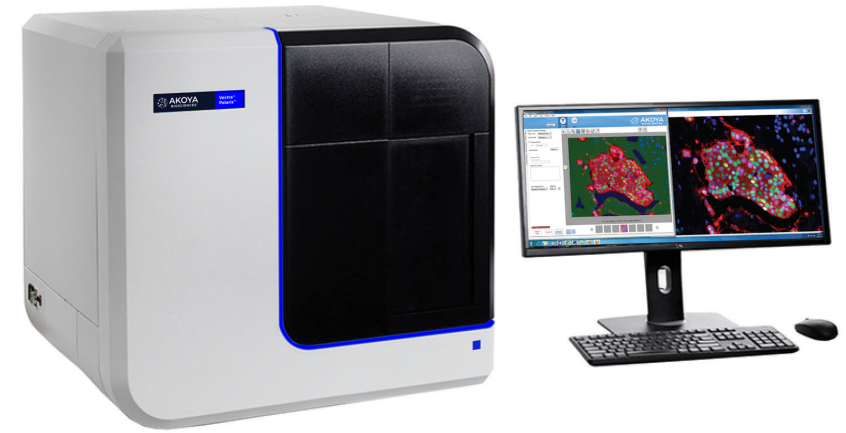
WHAT'S NEW IN VECTRA POLARIS 1.0?



Vectra Polaris scans both brightfield and fluorescent slides, and can take multispectral imagery of user-specified areas of interest, user-chosen TMA cores, or areas of interest determined through the use of inForm Tissue Finder.

Below, we've highlighted the new features of Vectra Polaris 1.0

- Slide Carriers
- Dashboard
- Protocol Editor
 - Opal Kit-Based Protocols (new in 1.0.8!)
 - Multispectral Whole Slide Scanning (new in 1.0.8!)
- Snapshots and Exposures
- Scanning Slides



SLIDE CARRIERS

Vectra Polaris uses slide carriers for touchless slide processing; up to 4 slides can sit in a single carrier.

The Vectra Polaris system can hold 20 carriers at a time.



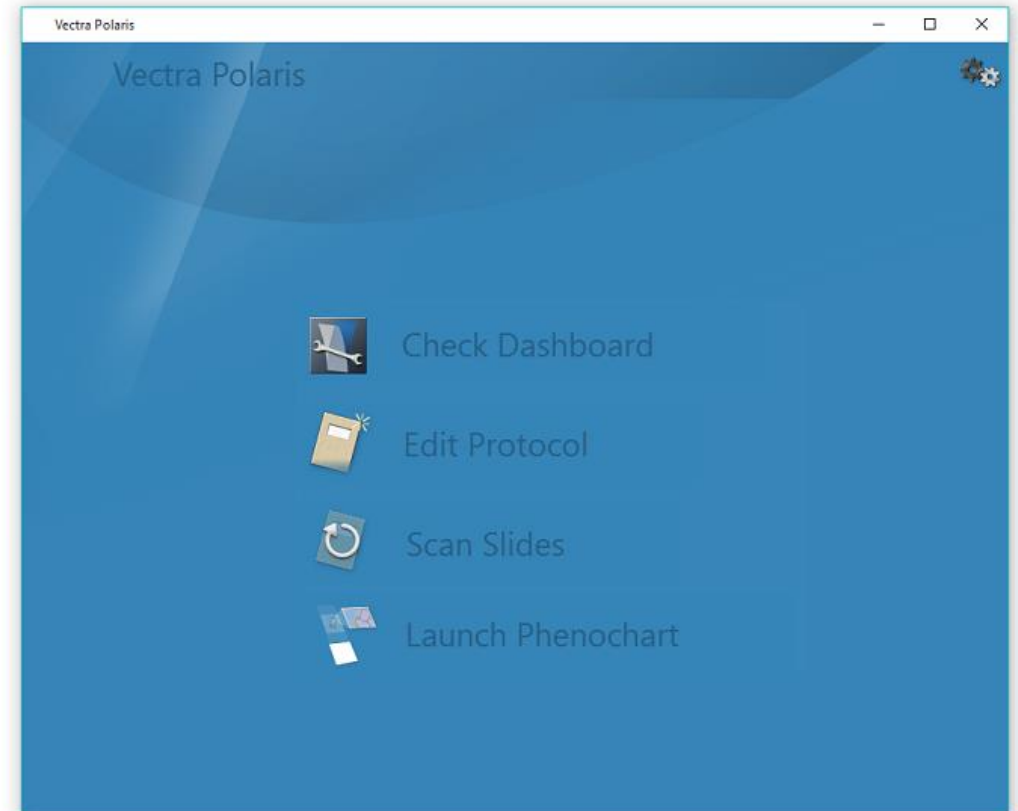
HOME SCREEN

The Vectra Polaris home screen is organized by task.

The Dashboard provides the tools to confirm that your system is configured properly before scanning.

The Protocol Editor is a one-stop place for protocol creation and editing.

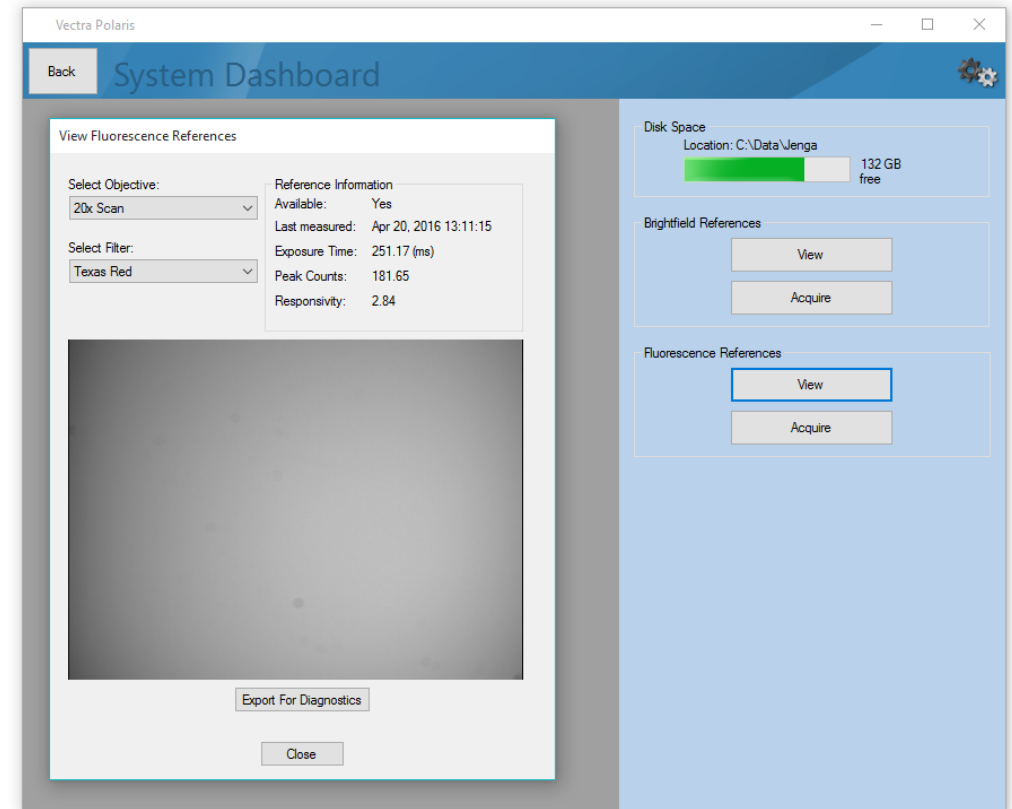
The slide scanning editor lets you easily set up your scans and walk away while Polaris scans.



DASHBOARD

The Vectra Polaris Dashboard provides tools to let you:

- See the available disk space.
- View and take brightfield and fluorescence references.

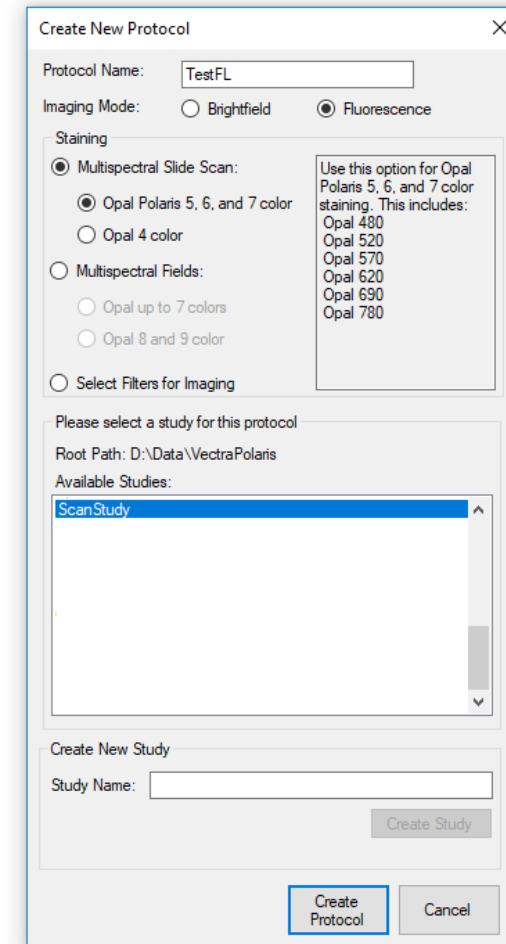


PROTOCOL CREATION

Users who upgrade their filters with the 1.0.8 software release are able to easily create protocols for Opal stained slides.

- You can scan whole slides multispectrally with Opal Polaris 7 and Opal 4 staining.
- A conventional whole slide scan with multispectral fields is available for the Opal 7 kit, as well as Opal 8 and 9 color.

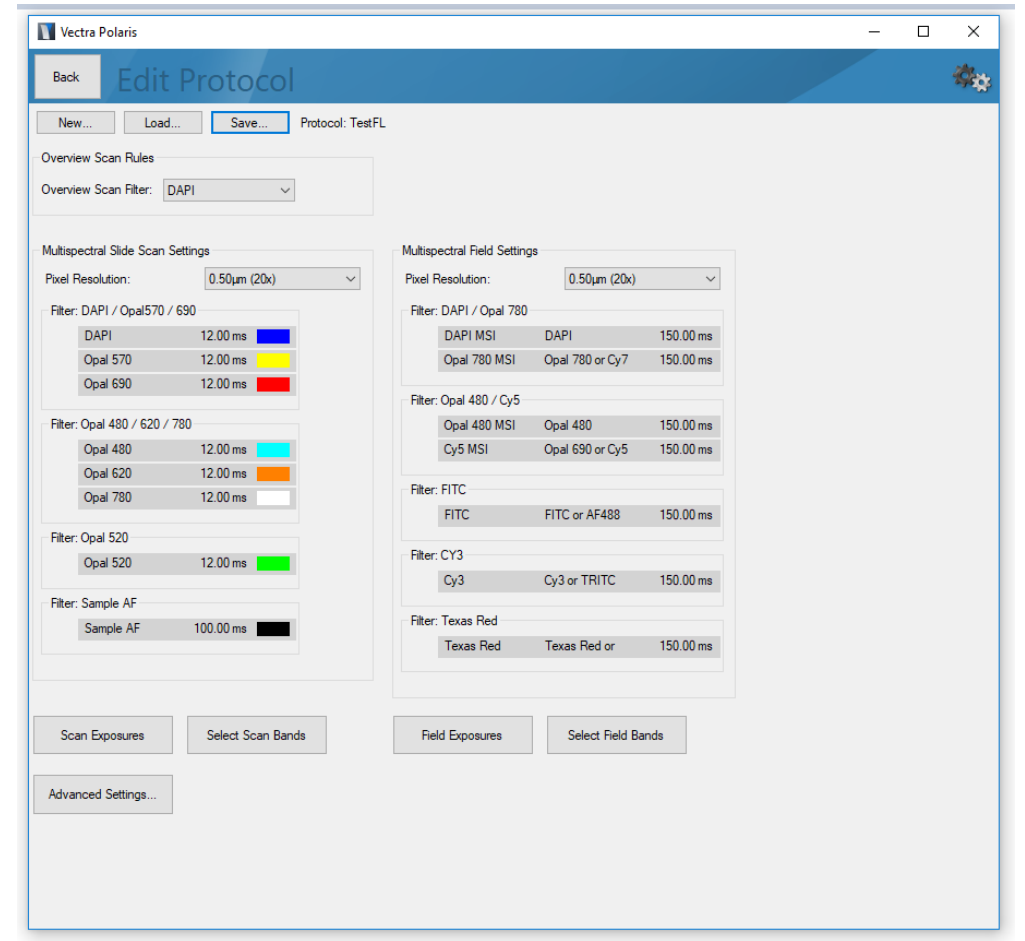
Select the Opal option in the Staining section to create a protocol with the necessary filters, or you can select custom filters for imaging as well.



PROTOCOL EDITING

Protocol Editing in Vectra Polaris is a simple process:

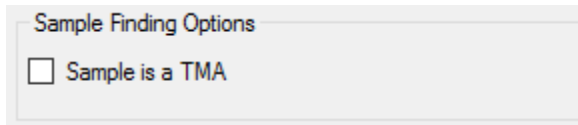
- Select your imaging resolutions for the slide scan and multispectral regions.
- Set your filters, bands, and exposures in fluorescence.



PROTOCOL EDITING

Use the Advanced Settings button to access the Autofocus, TMA Sample finding, and Barcode settings in the protocol.

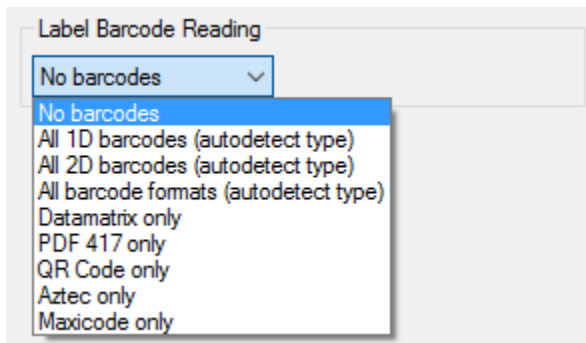
- If your samples are TMAs, check Sample is a TMA to use a tissue finding algorithm that is customized for the TMA format.



Sample Finding Options

Sample is a TMA

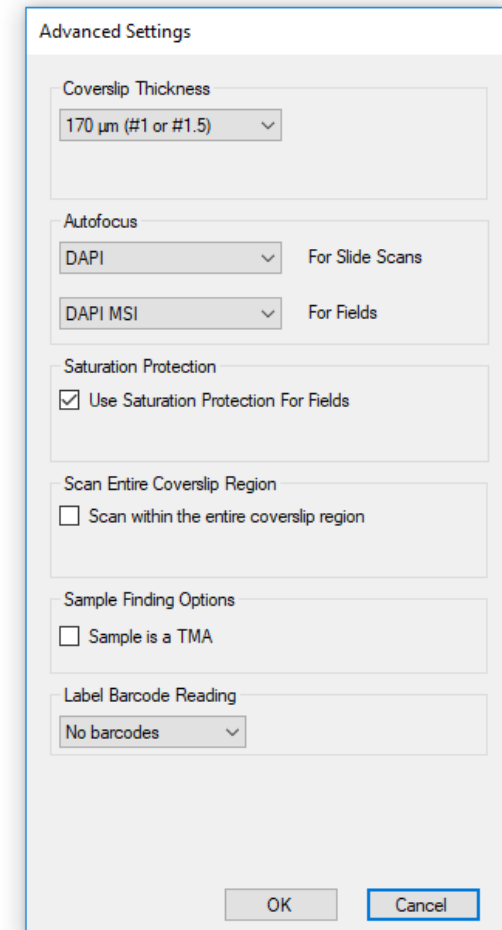
- If your slide labels have barcodes, you can store the decoded label contents within the .qptiff. Select the type of barcodes on your slide.



Label Barcode Reading

No barcodes

- No barcodes
- All 1D barcodes (autodetect type)
- All 2D barcodes (autodetect type)
- All barcode formats (autodetect type)
- Datamatrix only
- PDF 417 only
- QR Code only
- Aztec only
- Maxicode only



Advanced Settings

Coverslip Thickness
170 μ m (#1 or #1.5)

Autofocus
DAPI For Slide Scans
DAPI MSI For Fields

Saturation Protection
 Use Saturation Protection For Fields

Scan Entire Coverslip Region
 Scan within the entire coverslip region

Sample Finding Options
 Sample is a TMA

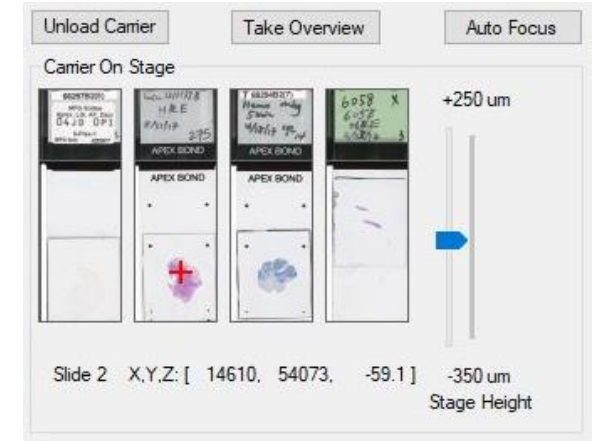
Label Barcode Reading
No barcodes

OK Cancel

SNAPSHOTS AND EXPOSURES

When setting exposures in fluorescence (or taking brightfield snapshots) you can take an overview to help locate relevant areas of tissue.

- Click the **Take Overview** button when a carrier is on stage to acquire an overview.
- A color overview is available for brightfield snapshots.
- An enhanced grayscale overview is available for fluorescence exposures.

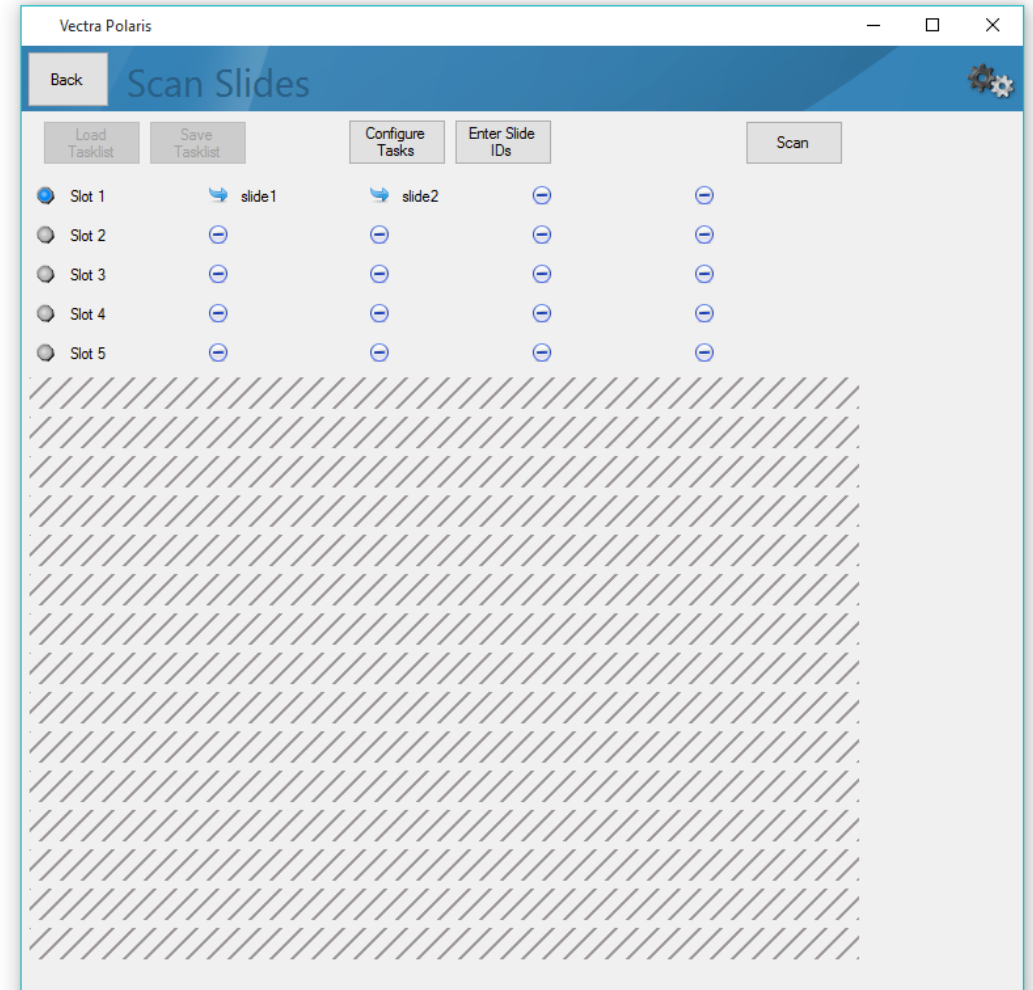


SCANNING SLIDES

Configure your scanning tasks for one or more carriers. You can apply the same settings to all slides, or different settings for individual slides.

Click Scan to start scanning!

You can pause a scan to unload completed slides and reload the system with new carriers to process.



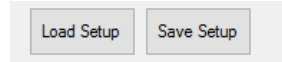
SAVING AND LOADING SCAN SETUP INFORMATION



After configuring your scanning tasks, you can save the setup information for later use. Click Save Setup to save your selected studies, tasks, protocols, and slide IDs.

Click Load Setup to import previously saved work into the Scan Slides Editor.

You may need to place your carriers back in the hotel. See “Setting Up Scan Rules” in the manual for more information.



Load Scan Setup

Display for the last: Day Week Month All

Date	Name	Notes	Studies	# Carriers	Permanent
6/15/2018 5:28:38 PM	PD-L1	520 titrations	180614 PDL1 520 titration and 180614 CD8 480 titrations	1	No
6/15/2018 5:27:12 PM	PDL1, CD8 titrations	CC, Opal titrations, tonsil	180614 PDL1 520 titration and 180614 CD8 480 titrations	2	No

Delete Load Cancel